



Instruction Manual

review_115 V 00_20

Multi

Festa



**illustrative image*


AUTOMATIC DOSING OF PRODUCTS

NATIONAL
E Q U I P M E N T

National Equipment Distributors LLC.
624 Matthews-Mint Hill Rd. Suite 122
Matthews, NC 28105 USA
(877) 805-2045
nationalequipmentdistributors.com

SUMMARY

PAGE 03	IMPORTANT NOTES
PAGE 04	DATA SHEET
PAGE 05	SAFETY COMPONENTES
PAGE 06	ASSEMBLY OF THE PARTS
PAGE 07	STANDER ACESSORIES
PAGE 08	AVAILABLE ACCESSORIES (purchase separately)
PAGE 10	SPARE PARTS
PAGE 15	FUNCTIONS IN THE ELECTRONIC PANEL
PAGE 16	DOSING MODE
PAGE 17	CONTINUOUS MODE
PAGE 18	CLEANING
PAGE 19	ELECTRIC COMPONENTS
PAGE 20	ELECTRIC DIAGRAM

					
Av. Sete Quedas, 1028 - Vila Padre Bento, CEP:13313-006 - Itu - São Paulo - Brasil Phone : +55 (11) 4013-7223 www.mci.com.br email: meajuda@mciind.br					
Model:	Multi Festa	Batch:		Frequency:	60 Hz
Year:	2020	Serial Number:		Rated Current:	0,30 A
Capacity:	N.A.	Power Input:	45 W	Rated Voltage:	115 V
cód.51482					

cole a etiqueta nº série

manual code: 51826
equipment code: 51843
panel code: 51707

Name: METALÚRGICA CONVENÇÃO DE ITU LTDA.	
Address: 1028, Sete Quedas Avenue	Zip code: 13.313-006
Bairro: Vila Padre Bento	City/ State: Itu – SP
CNPJ: 49.563.117/0001 - 72	State Enrollment: 387.024.638.117
Phone: +55 011 40137223	

SAFETY INSTRUCTIONS

Carefully read the Maintenance and Operation Manual, as for all the indicated warnings on the equipment before operating it. Failure to follow these instructions and notices may result in serious injuries to the operator.

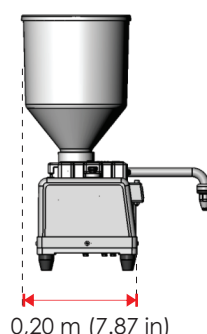
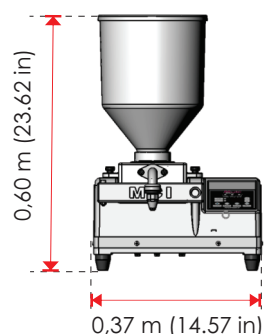
1. The equipment must be installed in locations where use and maintenance are restricted to trained and/or qualified people;
2. Do not install the equipment in locations exposed to water jet. Do not immerse its bottom in water or other liquid, nor rinse it with running water, unless advised by a specific instruction.
3. The MCI equipment shall be installed with suitable electrical grounding. Failure to this electrical grounding may cause electrical damages to the equipment, such as the electronic board burning. For your safety, ask for a qualified electrician to check the conditions of the power grid of the equipment installation site.
4. This equipment shall not be operated by people with physical or mental limitation nor children, unless they are instructed for the use of the equipment and supervised by a responsible person for their safety;
5. Take off rings, jewelry, watches and loose clothes. Keep your hair away from the moving parts of the machine;
6. Never use accessories or parts from other manufacturers. Before switching on the device, be sure that all the parts are correctly assembled;
7. Only operate the equipment if the safety protections are perfectly fitted. The protections shall only be removed from the device when it is switched off;
8. Before connecting the device, be sure that the indicated voltage of the equipment is the same as the socket. The voltage of this equipment is 115 V;
9. Do not use the device if the plug or the power cable are damaged;
10. Connect your equipment into a close and exclusive socket. Do not use extension cables or plug adapters (T type). Arrange the equipment in a way that it does not interfere with its disconnection from the power supply. Do not connect the equipment into damaged sockets;
11. The total shutdown occurs when the power plug is removed from the socket. In case of abnormalities, remove the power plug from the socket;
12. Equipment for internal use. The equipment must be installed in a horizontal plane and has at least 0.25 m (10 in) width and 0.40 m (16 in) length. It is ideal to have a complementary support area for tools;
13. The operating temperature range is from 10 °C (50°F) to 40 °C (104°F);
14. Carefully follow the equipment cleaning and disassembly procedures shown in this manual;
15. A thorough reading of this manual and/or video visualization of the Pratic Desk allows the operator to be capable of operating this equipment. Access the website: www.minidesk.ind.br

MCI recommends the mandatory use of all safety devices.

Any modification in the equipment, changes or adjustments of the safety systems installed by MCI may cause serious injuries to the physical integrity of the machine operator.

MCI is not responsible for any modification in the equipment. The machine's owner is considered responsible for any changes.

illustrative image



Weight net: 14,7 kg
(32.41 lb)

Description:

Multi Festa, semi-automatic dosing, dose and filling products with creamy or pasty consistency. It has a dosing pump that imparts uniformity in dosage and filling, productivity, economy and operational safety for your business.

The equipment is not allowed to use solid and dry products such as dough, cubed fruits and vegetables, bars of chocolate, grated coconut, and liquid products in general such as juices, carbonated drinks and alcoholic beverages.

Visit our channel <https://www.youtube.com/user/videosmci> for further clarification.

Electrical data: 115 V	The MCI dosing, Multi Festa, must be installed with a suitable electrical grounding. Failure to electrical grounding may cause electric damages. For your safety, ask for an electrician you trust to check the condition of the power grid of the equipment installation site.
Power	45 W
Motor potency	Dosing/ filling pump: 45W
Productive capacity	Variable by product Volumetric capacity: 5 liters (1,32 gal)
Anti-drip system	At the end each dosing, reversing the rotation of the dosing lobes avoids or minimizes dripping. Used for more fluid products.
Dosage	Mousse, mini cake, pasty sweets
Filling	«Churros», cake “bebezinhos”, donuts, «bomba», «carolinas»

SAFETY COMPONENTS

Multi Festa provides safety components that fully meet the regulatory standard of safety, containing fixed protection, mobile protection and interconnected devices to ensure operator safety in accident prevention.

SAFETY SENSOR FOR THE FUNNEL POSITIONING

It terminates the general operation of equipment when the funnel is removed or is misaligned.



illustrative image



FUNCTIONS IN THE ELECTRONIC PANEL

Signaling lamps

Select **dosing** (interval) or **continuous** mode

Increases or decreases each parameter of the selected function

Amount

It refers to the time in which the dosing lobes move, determining the amount/volume of the dosed product.

Speed

It refers to the speed of rotation of the dosing lobes. The higher this value, the faster will be the dosage.

Recoil

It refers to the reversal of the direction of rotation of the dosing lobes that are intended to contain some product leakage between one dosage and other.

Number of doses

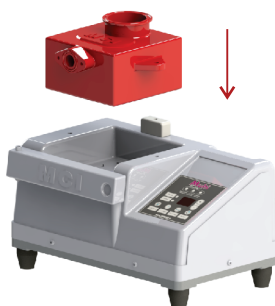
Repeated doses in the same tray



Then, the sequence of ASSEMBLY of the parts of **MULTI FESTA**:



1. With the clean machine, follow the sequence;



2. Fit the dosing pump of lobe ever assembled;



3. Fix the pump by the maniples;



4. Fit the funnel. Make sure that the sealing ring is well positioned to avoid leaks;



5. Attach the clamp to secure the funnel. Cap the funnel and screw the cover to fix it;



6. Fit the accessory to dosing or filling. Use the ring o'ring to prevent leaks;



7. Fix the acessory by the two maniples;



8. The motor can be driven by the trigger pedal. In this case connect it to rear of the machine



9. Plug into the socket 10A



10. Fill the funnel with the product to be dosed or stuffed.

IMPORTANT INFORMATION FOR THE USAGE OF THE **MULTI FESTA**:

When using the **MULTI FESTA**, keep the uniform product volume in funnel to no weight change in dosage.

Keep the air-conditioned production environment to not interfere in the product weight change.

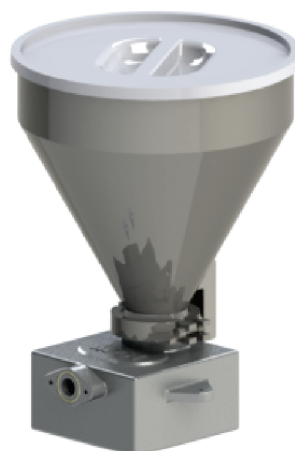
MULTI FESTA comes with the following accessories:



two maniples

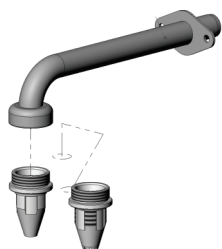


cabinet



pump dosing set
and cover

for dosing



set dosing with
injected nozzle

code 46193

for filling



set nozzles to
stuff Ø8mm

code 46199



Allen wrench
3 mm (0.11 in)

code 2541



Pump wrench

code 46026



actuator pedal

code 15898



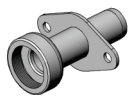
Assembly of the
simple dosing nozzle



Assembly of the
simple filling nozzle



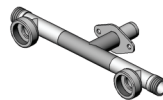
One way
assembly
code 46194



Universal way
assembly (straight)
code 46198



Curve one way
assembly
code 46217



Two ways
assembly
code 46200



Nut
M20 x 2
code 48264



needle nozzle
stopper 8 mm (0.31 in)
code 46047



needle nozzle
8 mm (0.31 in)
code 46935



needle nozzle 5mm
«chuveirinho»
code 48229



Plain straight
nozzle n#4 - MCI
code 47616



Ribbed straight
nozzle n#4 - MCI
code 47617



Mago nozzle
socket
code 48268



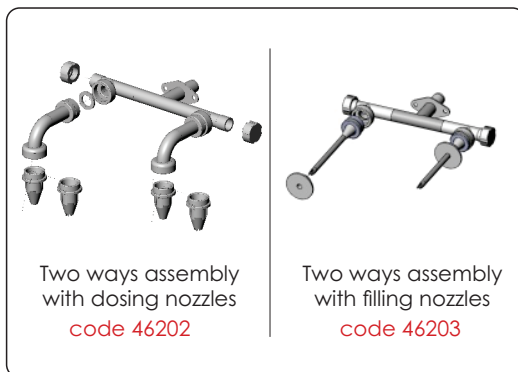
Mago nozzle
n#22
code 35724



Mago nozzle
n#10
code 16342



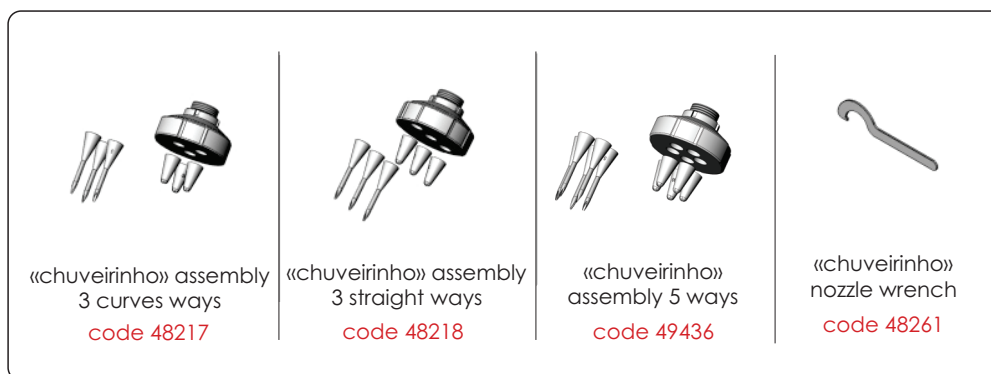
Mago nozzle
n#30
code 35726



Assembly of the double
filling nozzle



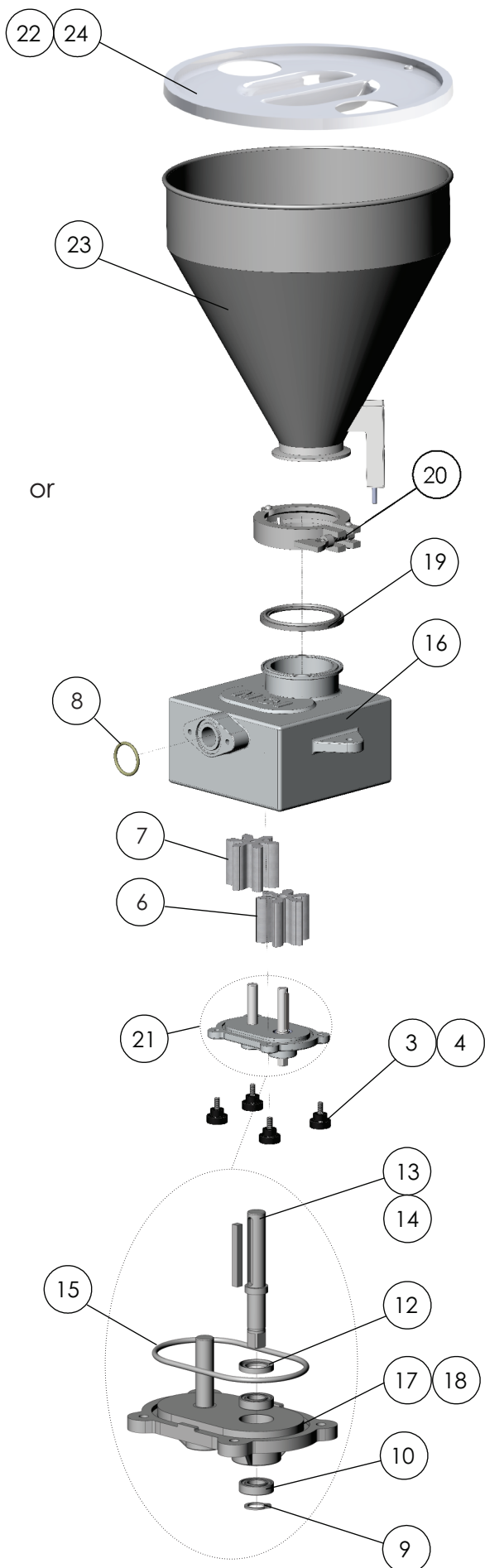
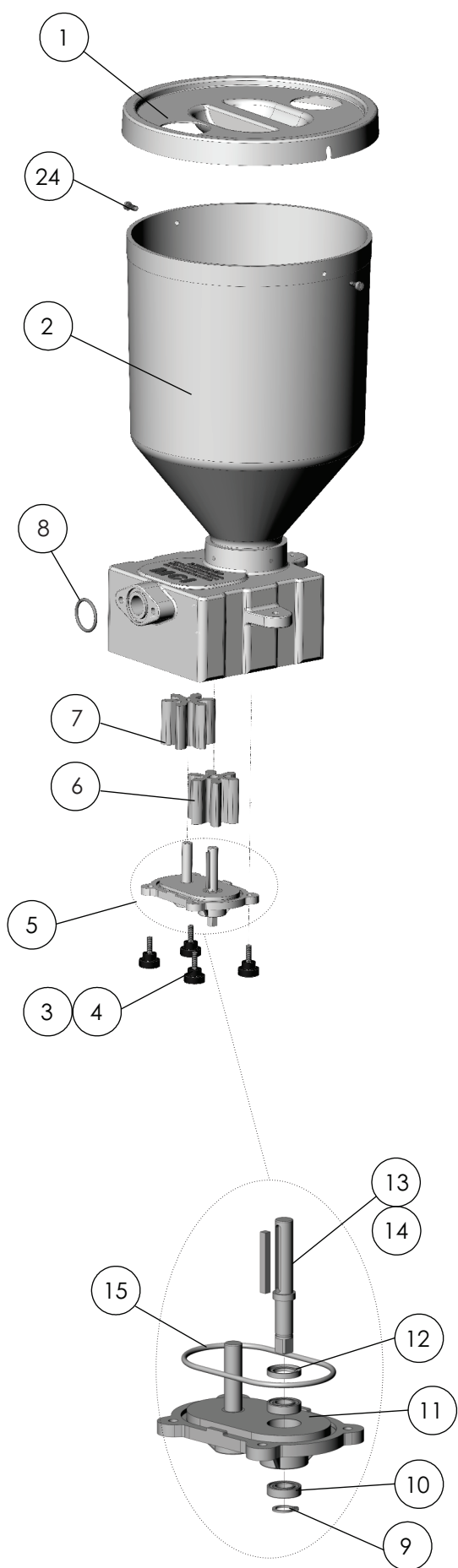
Assembly of the double
dosing nozzle



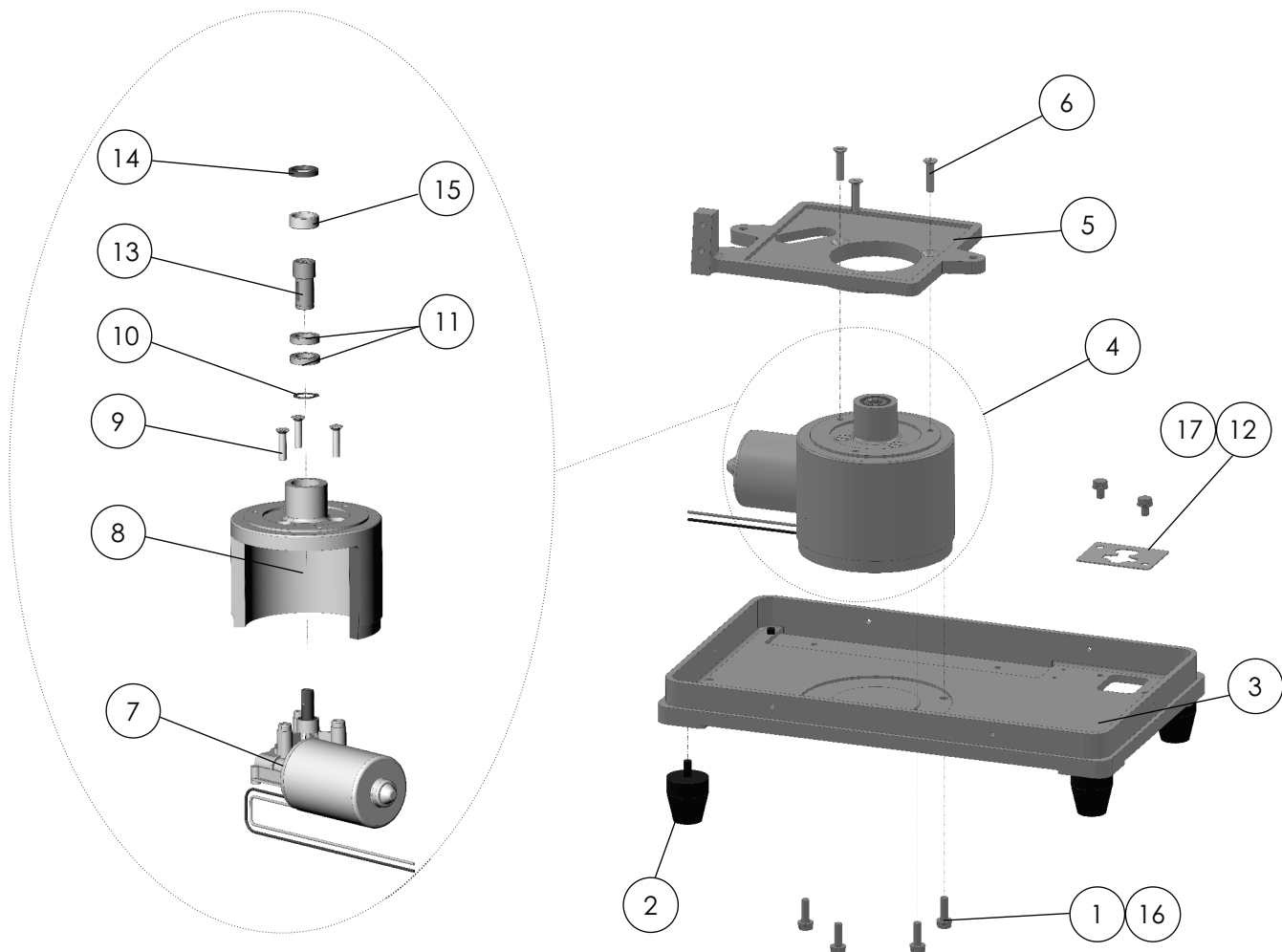
Assembly of the
«cuveirinho» filling



ITEM	CODE	QTY.	DRAWING	DESCRIPTION
1	48595	1	01-0347-041	Funnel set
2	48188	1	01-0347-028	Pump set
3	46173	1	02-0347-012	Retainer - Ø56X36 mm
4	51453	1	01-0347-046	Base assembly UL
5	46142	1	12-0347-007	Dosing drive
6	46174	1	02-0347-013	Sensor drive bearing
7	48605	2	02-0347-009	Zinc plated spacer
8	51842	1	12-0347-022	Cabinet - UL
9	04231	1	04231	Self locking hexagonal nut - M06
10	03099	2	03099	Slotted cap screw - M4x12 m
11	00129	2	00129	Plain washer - M04
12	49030	1	03-0347-010	Push button adapter
13	50487	1	12-0347-019	Push button protection
14	00140	5	00140	Hex cap screw - M5x12mm
15	22448	2	22448	Nutless hexagonal screw set - M6x20 mm
16	14313	4	14313	Maniple - MAM-I 00842
17	14149	2	14149	Headless Allen screw - M6x30 mm
18	00953	2	00953	Slotted flat head screw - M06x30 mm
19	00415	1	00415	Hex cap crew - M06x50 mm
20	00119	2	00119	Lock washer - M04
21	15898	1	15898	Mini foot switch - FSP-1 cabo 2m
22	50083	1	50083	Interruptor push button
23	51407	1	02-0347-074	Chock - 6,5x9,5x#4,8
24	51409	2	02-0347-073	Chock - 6,5x9,5x#6,8
25	00977	1	00977	Plain washer - M5
26	46171	1	01-0347-011	Dosing pump of lobes assembly with funnel

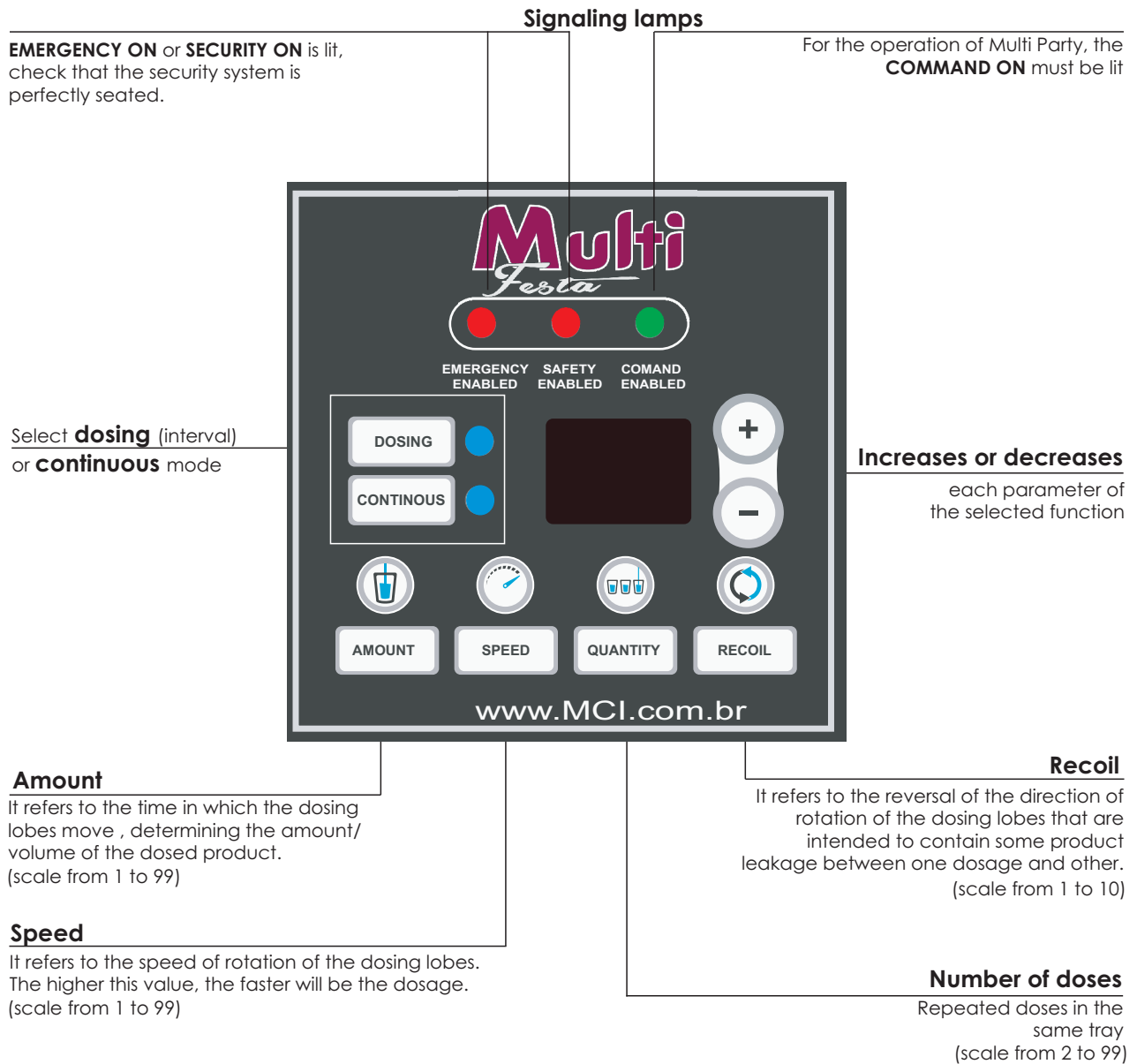


ITEM	CODE	QTY.	DRAWING	DESCRIPTION
1	46145	1	12-0347-006	Funnel cover
2	51887	1	02-0347-078	Dosing pump of lobes assembly (with funnel)
3	23676	4	23676	Headless Allen screw - M5 x 25mm
4	16533	4	16533	Maniple - Mam-I 00841
5	46168	1	01-0347-013	Dosing pump cover assembly
6	46162	1	02-0347-004	Z6 motor gear - dosing pump
7	46170	1	02-0347-003	Z6 moved gear - dosing pump
8	10160	1	10160	O-ring silicone ring ø27x3mm
9	26490	1	26490	Elastic ring E10
10	46166	2	46166	Stainless steel bearing SKF 6800ZZ(d10xD19x5)
11	45999	1	12-0347-003	Injected lower pump cover
12	51889	1	51889	Retainer ø12,7
13	46160	1	02-0347-002	Motor axis - dosing pump
14	24486	1	24486	Shaft key - 4x4x35 mm
15	46169	1	46169	O-ring silicone ring ø77x3mm silicone translúcido
16	48586	1	02-0347-054	Aluminum pump
17	48178	1	02-0347-038	Aluminum pump cover
18	48180	1	02-0347-039	Aluminum pump shaft
19	48184	1	48184	Sealing ring - TC-Ø2.1/2"
20	48183	1	48183	Clamp - TC 2 1/2" - stainless
21	48186	1	01-0347-029	Pump cover set
22	49765	1	07-0347-002	Funnel cover
23	48596	1	04-0347-013	Funnel set
24	21429	2	21429	Slotted head screw - M5x12mm



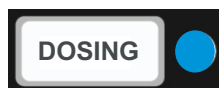
ITEM	CODE	QTY.	DRAWING	DESCRIPTION
1	00142	4	00142	Hex cap screw - M06x20 mm
2	13622	4	13622	Rubber foot
3	51454	1	02-0347-068	Lower base - UL
4	51452	1	01-0347-049	Drive assembly - UL
5	46106	1	02-0347-008	Pump support - Multi Festa dosing
6	04397	3	04397	Slotted flat head screw - M6x25 mm
7	50669	1	07-0000-053	Motor Bosch 310
8	46103	1	02-0347-006	Drive support
9	04397	3	04397	Slotted flat head screw - M6x25 mm
10	01880	1	01880	Elastic ring E-15
11	08283	2	08283	ZZ (d15xD24x5) bearing
12	06744	2	06744	Hex cap screw - M6x10 mm
13	46187	1	04-0347-001	Traction axis
14	48568	1	48568	Retainer Ø18,0 x Ø24,0 x 4 Perfil GA1
15	49338	1	02-0347-059	Retainer bushing
16	00125	6	00125	Plain washer - M6
17	51840	1	03-0347-026	Self locking wire connector base - UL

FUNCTIONS IN THE ELECTRONIC PANEL



1. Connect the Multi Party in outlet, to trigger the rotary switch;
2. Place the product to be used in the funnel after complete assembly of the Multi Party

SELECT THE DOSING MODE,



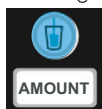
Press the button,
the blue light will

* To operate the machine, the
COMMAND ENABLE must be lit



3. Program "AMOUNT", "SPEED", "QUANTITY" and "RECOIL" according to the product characteristics. The settings of "AMOUNT", "SPEED" and "RECOIL" shall determine the weight of the dosing or stuff:

Press the button,
the blue light will



AMOUNT: corresponds to the time the dosing lobes move, determining the quantity /volume of product dosed. The more value, the more product is dosed

Press the button to
the desired value



scale from 1 to 99

Press the button,
the blue light will



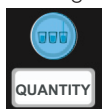
SPEED: corresponds to the speed of rotation of the lobes does. Therefore the higher the value, the more product is dosed.

Press the button to
the desired value



scale from 1 to 99

Press the button,
the blue light will



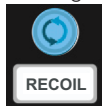
QUANTITY: corresponds to the number of dosages, for example, on the same tray, without the need for the pedal.

Press the button to
the desired value



scale from 2 to 99

Press the button,
the blue light will



RECOIL: corresponds to the inversion of the movement of the gears to contain the drip. It also determines between each dosage

Press the button to
the desired value



scale from 1 to 10

4. To start, press the front 'dosing drive' or the pedal connected to the back of the machine. Just one touch required for each dosage.

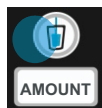


or dosing drive



During each dosing the display will show:

- Regression of **AMOUNT** (blue light turns on) the display. For example, if the set value is **50**, the display will show the countdown (50, 49, 481)



- Then the display will show the **QUANTITY** (blue light goes on) missing value programmed

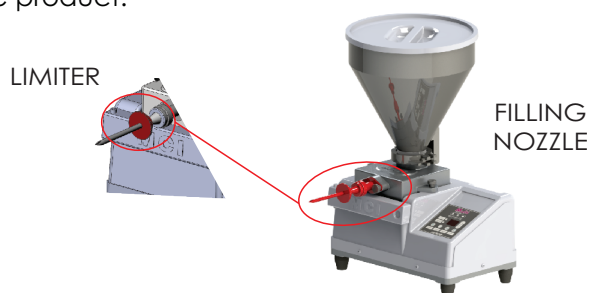


IMPORTANT INFORMATION FOR THE USAGE OF THE **MULTI FESTA**:

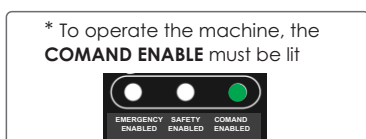
The amount of product in the hopper directly affects the accuracy of weighing. Keep the stable level of product in the hopper, feeding it often as production.

Keep the air-conditioned production environment to not interfere in the product weight change.

Note: The FILLING NOZZLE assembly contains a LIMITER so that the product to be filled is not fully drilled.
Adjust your position according to the size of the product.



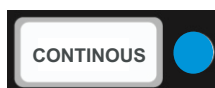
1. Connet the Multi Festa in outlet;



2. Place the product to be used in the funnel after complete assembly of the Multi Festa



SELECT THE CONTINUOUS MODE,



Press the button, the blue light will

3. Program "SPEED" and "RECOIL" according to the product characteristics.

Press the button, the blue light will



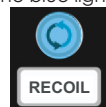
SPEED: corresponds to the speed of rotation of the lobes does. Therefore the higher the value, the more product is dosed.

Press the button to the desired value



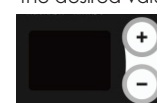
scale from 1 to 99

Press the button, the blue light will



RECOIL: corresponds to the inversion of the movement of the gears to contain the drip. It also determines between each dosage

Press the button to the desired value



scale from 1 to 10

In **CONTINUOUS** mode, there will be not adjustments to the AMOUNT and QUANTITY parameters.

4. For dosing, press the front 'dosing drive' or the pedal connected to the back of the machine.



or

DOSING DRIVE



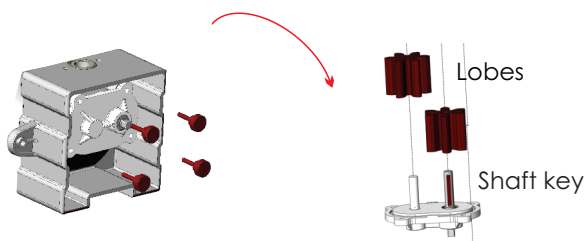
For CLEANING of the MULTI FESTA, the product should be removed completely from the hopper;

1. Press the button until the **"continuous"** selection. Press continuously the pedal to remove the product from the hopper. If necessary, make the manual removal of excess of waste in the hopper;
2. Remove the driver set (nozzle) and other accessories used;
3. Disassemble all parts, removing the hopper and pump cabinet;
4. After removing the hopper of the pump, remove it by removing the Allens bolts for proper cleaning of dosing lobes;
5. Wash with water all the dismantled parts;
6. Wipe with a damp cloth the cabinet.

IMPORTANT

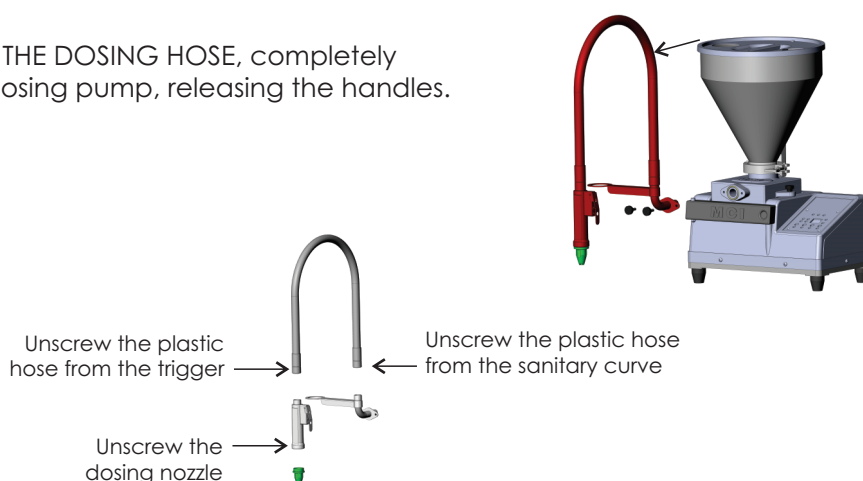
DO NOT THROW WATER IN CABINET FOR NOT WATERING THE ELECTRONIC BOARD

For the CLEANING OF THE PUMP OF LOBES, disassemble the assembly by removing the 4 maniples that fix the cover. Undo the lobes. Wash all parts with mild soap and soft sponge.



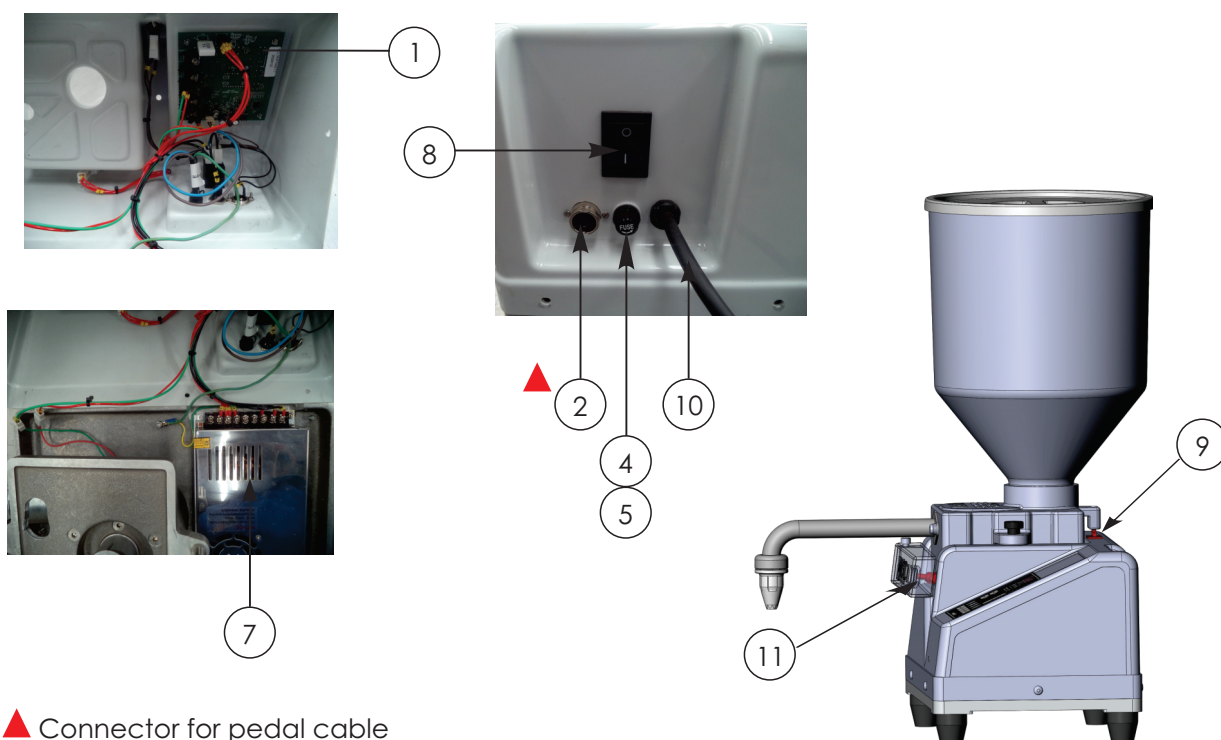
Rinse all parts separately with running water and neutral soap, soak in mild soap solution, if necessary. Rinse thoroughly before reusing it.

For CLEANING OF THE DOSING HOSE, completely disassemble the dosing pump, releasing the handles.



Rinse the hose with running water and soak in mild soap solution, if necessary. Rinse thoroughly before reusing it. The cleaning of the hose should be done immediately after the production to not hamper their cleaning.

115 V AC



ITEM	CODE	QTY.	DESCRIPTION
1	50391	1	Eletronic board
2	51798	1	DIN 4 female
3	51818	1	Push button pedalboard
4	50162	1	Fuse holder Schurter modelo FPG1 (5X20 mm Ip40)
5	50163	1	Glass fuse 5 A Ø5x20 mm Schurter 250V
6	51797	1	DIN 4 male
7	51551	1	Power supply Schmersal mod. PSS-B24-240S
8	50085	1	Bipolar switch Mar Girius MOD. 30223 M2FT2FE3V/197
9	50083	1	Push Botton security
10	51516	1	Electric whip
11	51814	1	Push Botton manual
12	54586	1	Glass fuse - 1 A Ø5x20 mm Schurter
13	54587	1	Glass fuse - 4A Ø5x20 mm Schurter
14	54536	2	Fuse holder UKK5 HESI (5X20)
15	40999	1	Base for relay - mod. PRTS Metalltex
16	41246	1	Relay - Metalltex model TNA4R3C - 24 VCC

